

# MV-1 Series

## Manual PTFE Stop Cock Valve

aerospace  
climate control  
electromechanical  
filtration  
fluid & gas handling  
hydraulics  
pneumatics  
process control  
sealing & shielding

### Product Overview:

The MV-1 Series is designed for semiconductor fluid, ultra-pure water and aggressive chemical applications.

The MV-1 Series utilizes a machined PTFE body for superior chemical resistance. The body has a straight through flow path that is combined with a PTFE full flow orifice stem for maximum flow, minimum pressure drop and 1/4 turn operation.

The MV-1 is offered for inline and panel mount applications, and is also available in 2 and 3 way configurations.



### Contact Information:

Parker Hannifin Corporation  
Veriflo Division  
**Partek Operation**  
7075 East Southpoint Road  
Tucson, Arizona 85756

phone 520 574 2600  
fax 520 574 2700

[www.parker.com/partek](http://www.parker.com/partek)

### Product Features:

- Full flow orifice provides maximum flow at the desired size.
- The precision machined stem and body provide a tight shut off and 1/4 turn operation which minimizes pressure drop and provides a high cycle life.
- Stem utilizes Parofluor o-rings which provide excellent chemical resistance and produce a positive body to stem seal.

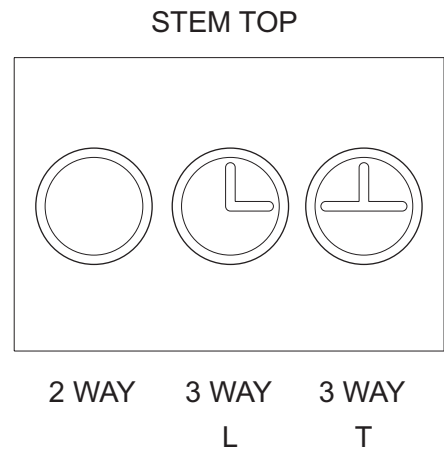
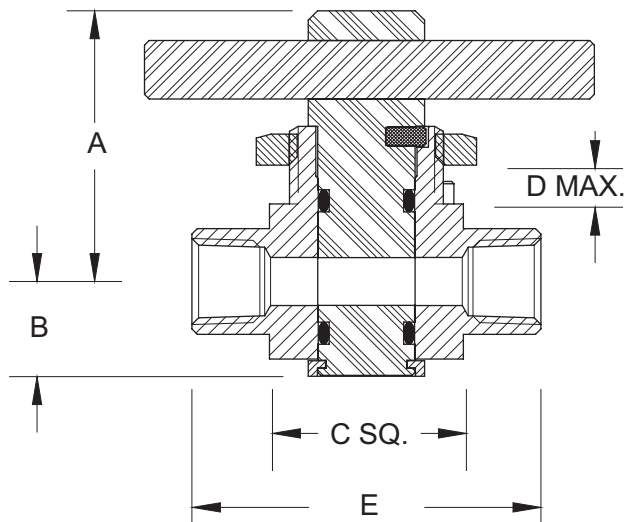
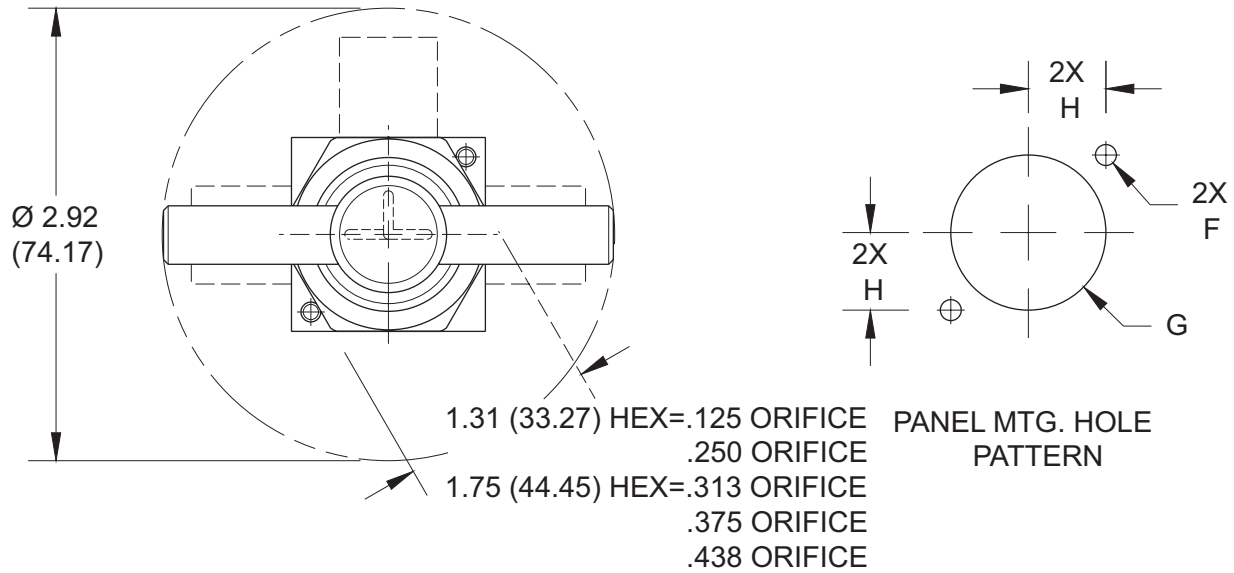


ENGINEERING YOUR SUCCESS.

# MV-1 Series

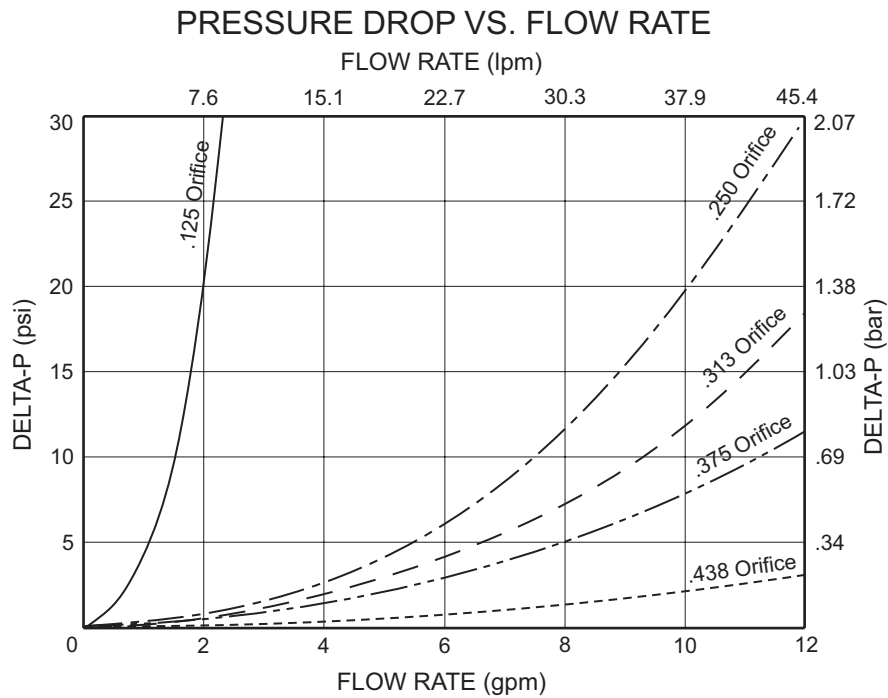
## Dimensional Drawing

Note: Parenthesis dimensions are in "mm"



# MV-1 Series

## Flow Curves



## Ordering Information

Model Number	Orifice	Operation	Port Config.	Dimensions in (mm)							
				A	B	C	D	E	F	G	H
MV-1-1414	.250	2 WAY	1/4" FNPT	1.78 (45.21)	.61 (15.49)	1.25 (37.75)	.25 (6.35)	2.00 (50.80)	Ø.14 (3.56)	Ø1.00 (25.40)	.50 (12.70)
MV-1-1424	.250	3 WAY L	1/4" FNPT	1.78 (45.21)	.61 (15.49)	1.25 (37.75)	.25 (6.35)	2.00 (50.80)	Ø.14 (3.56)	Ø1.00 (25.40)	.50 (12.70)
MV-1-1434	.250	3 WAY T	1/4" FNPT	1.78 (45.21)	.61 (15.49)	1.25 (37.75)	.25 (6.35)	2.00 (50.80)	Ø.14 (3.56)	Ø1.00 (25.40)	.50 (12.70)
MV-1-6214	.125	2 WAY	1/4" PARFLARE	1.78 (45.21)	.61 (15.49)	1.25 (37.75)	.25 (6.35)	3.55 (90.17)	Ø.14 (3.56)	Ø1.00 (25.40)	.50 (12.70)
MV-1-6224	.125	3 WAY L	1/4" PARFLARE	1.78 (45.21)	.61 (15.49)	1.25 (37.75)	.25 (6.35)	3.55 (90.17)	Ø.14 (3.56)	Ø1.00 (25.40)	.50 (12.70)
MV-1-6234	.125	3 WAY T	1/4" PARFLARE	1.78 (45.21)	.61 (15.49)	1.25 (37.75)	.25 (6.35)	3.55 (90.17)	Ø.14 (3.56)	Ø1.00 (25.40)	.50 (12.70)
MV-1-1616	.375	2 WAY	3/8" FNPT	2.24 (56.90)	.74 (18.80)	1.50 (38.10)	.50 (12.70)	2.50 (63.50)	Ø.20 (5.08)	Ø1.44 (36.58)	.60 (15.24)
MV-1-1626	.375	3 WAY L	3/8" FNPT	2.24 (56.90)	.74 (18.80)	1.50 (38.10)	.50 (12.70)	2.50 (63.50)	Ø.20 (5.08)	Ø1.44 (36.58)	.60 (15.24)
MV-1-1636	.375	3 WAY T	3/8" FNPT	2.24 (56.90)	.74 (18.80)	1.50 (38.10)	.50 (12.70)	2.50 (63.50)	Ø.20 (5.08)	Ø1.44 (36.58)	.60 (15.24)
MV-1-6416	.250	2 WAY	3/8" PARFLARE	1.78 (45.21)	.61 (15.49)	1.25 (37.75)	.25 (6.35)	3.71 (94.23)	Ø.14 (3.56)	Ø1.00 (25.40)	.50 (12.70)
MV-1-6426	.250	3 WAY L	3/8" PARFLARE	2.24 (56.90)	.74 (18.80)	1.50 (38.10)	.50 (12.70)	3.96 (100.58)	Ø.20 (5.08)	Ø1.44 (36.58)	.60 (15.24)
MV-1-6436	.250	3 WAY T	3/8" PARFLARE	2.24 (56.90)	.74 (18.80)	1.50 (38.10)	.50 (12.70)	3.96 (100.58)	Ø.20 (5.08)	Ø1.44 (36.58)	.60 (15.24)
MV-1-1818	.438	2 WAY	1/2" FNPT	2.24 (56.90)	.74 (18.80)	1.50 (38.10)	.50 (12.70)	2.76 (70.10)	Ø.20 (5.08)	Ø1.44 (36.58)	.60 (15.24)
MV-1-1828	.438	3 WAY L	1/2" FNPT	2.24 (56.90)	.74 (18.80)	1.50 (38.10)	.50 (12.70)	2.76 (70.10)	Ø.20 (5.08)	Ø1.44 (36.58)	.60 (15.24)
MV-1-1838	.438	3 WAY T	1/2" FNPT	2.24 (56.90)	.74 (18.80)	1.50 (38.10)	.50 (12.70)	2.76 (70.10)	Ø.20 (5.08)	Ø1.44 (36.58)	.60 (15.24)
MV-1-6618	.375	2 WAY	1/2" PARFLARE	2.24 (56.90)	.74 (18.80)	1.50 (38.10)	.50 (12.70)	4.20 (106.68)	Ø.20 (5.08)	Ø1.44 (36.58)	.60 (15.24)
MV-1-6628	.313	3 WAY L	1/2" PARFLARE	2.24 (56.90)	.74 (18.80)	1.50 (38.10)	.50 (12.70)	4.20 (106.68)	Ø.20 (5.08)	Ø1.44 (36.58)	.60 (15.24)
MV-1-6638	.313	3 WAY T	1/2" PARFLARE	2.24 (56.90)	.74 (18.80)	1.50 (38.10)	.50 (12.70)	4.20 (106.68)	Ø.20 (5.08)	Ø1.44 (36.58)	.60 (15.24)

# MV-1 Series

## Specifications

### Materials of Construction

Wetted Options	PTFE, Parofluor™
Non-wetted Options	HDPE, PFA, PVC, PVDF, Titanate

### Pressure Ranges

Ranges	0 - 60 PSIG (4.1 bar)
--------	-----------------------

Pressure ranges for operation at ambient temperatures. For additional information on materials of construction, functional performance and operating conditions, please contact factory.

### Temperature Ranges

Ambient	-60° - 212° F (-51° - 100° C)
Fluid	-60° - 400° F (-51° - 400° C)

### Flow Capacity

.125 Orifice	C <sub>v</sub> .36
.250 Orifice	C <sub>v</sub> 1.95
.313 Orifice	C <sub>v</sub> 2.50
.375 Orifice	C <sub>v</sub> 3.00
.438 Orifice	C <sub>v</sub> 6.55

Viton® is a registered trademark of DuPont Performance Elastomers L.L.C.

#### OFFER OF SALE:

The items described in this document are hereby offered for sale by Parker-Hannifin Corporation, its subsidiaries or its authorized distributors. This offer and its acceptance are governed by the provisions stated in the detailed "Offer of Sale" elsewhere in this document or available at [www.parker.com/veriflo](http://www.parker.com/veriflo)

#### WARNING USER RESPONSIBILITY

FAILURE OR IMPROPER SELECTION OR IMPROPER USE OF THE PRODUCTS DESCRIBED HEREIN OR RELATED ITEMS CAN CAUSE DEATH, PERSONAL INJURY AND PROPERTY DAMAGE. THIS DOCUMENT IS FOR REFERENCE ONLY. PLEASE CONSULT FACTORY FOR LATEST PRODUCT DRAWINGS AND SPECIFICATIONS

This document and other information from Parker-Hannifin Corporation, its subsidiaries and authorized distributors provide product or system options for further investigation by users having technical expertise.

The user, through its own analysis and testing, is solely responsible for making the final selection of the system and components and assuring that all performance, endurance, maintenance, safety and warning requirements of the application are met. The user must analyze all aspects of the application, follow applicable industry standards, and follow the information concerning the product in the current product catalog and in any other materials provided from Parker or its subsidiaries or authorized distributors.

To the extent that Parker or its subsidiaries or authorized distributors provide component or system options based upon data or specifications provided by the user, the user is responsible for determining that such data and specifications are suitable and sufficient for all applications and reasonably foreseeable uses of the components or systems.

